

Data Integration & Intelligence



Real-Time Solutions for Commercial Real Estate Ecosystems

Big Data for the Built-Environment

Real Time Insights from Inside

Di2 is the **Big-Data Platform** for Commercial Real Estate Ecosystems; the interconnections between People, Buildings , Businesses and Technology

Di2 represents a team with decades of experience in construction, property management, facility operations and the developing technology solutions for the **Built-Environment**

Di2 leverages cutting-edge tools to develop and deploy **DaaS (Data as a Service)**; Solutions that help our clients **increase revenue, control costs** and **manage risk**.

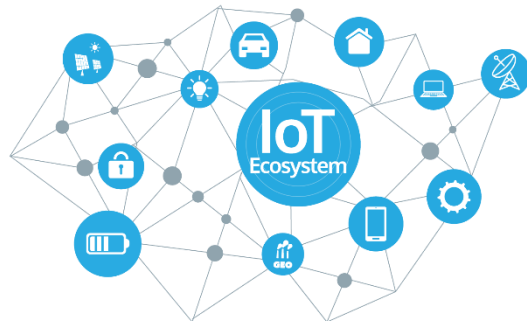


Transform Big Data into Smart Data

Connect people things & devices

As technology becomes more accessible and affordable, the digital ecosystem and resulting data outputs will continue to grow exponentially .

We help businesses wade through the impending tidal wave of data to discover new opportunities, drive efficiencies, improve customer and user experiences and create additional revenue.



Turn data into actionable insight

Whether its greater speed to understanding of business operations, identifying insights that would otherwise have been missed, improved efficiency or simply more sophisticated and granular insights.

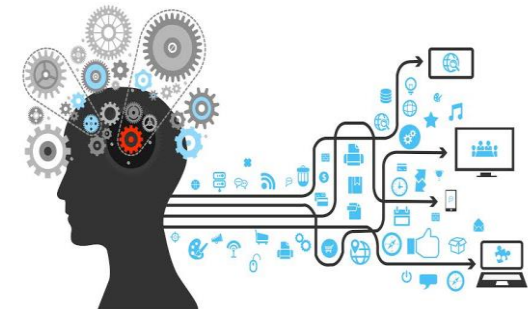
Using your existing data to drive an edge for your business is always smart – data is a tool which you can put to work very quickly to drive real improvements.



Visualise data & monetise opportunity

Presentation of your operational data in one place is very convenient for users across different business units or subsidiaries.

Once your data is integrated and synchronised it starts to provide a valuable resource to develop opportunities which can be monetised. In a recent survey KPMG identified that 58% of companies derived cost savings due to improved efficiency from data analytics.



Data Integration & Intelligence

Available on-demand on any device

Di2 leverages the power of the latest reduced infrastructure technologies to cost effectively collect, filter, analyze and report data from multiple sources for Real-Time Data Integration

Di2 takes data one step further by utilizing advances in Machine Learning (ML), Artificial Intelligence (AI) and Codeless Architecture to transform Big Data into actionable Real-Time Business Intelligence

Di2 solutions place your team in the perfect position to identify operational opportunities or threats and replaces reactive decision making with Proactive Intelligence



Our Sectors

Retail



Hospitality



Construction



Stadiums & Events



Logistics



Healthcare



Our Sectors

Corporate Real Estate



Media



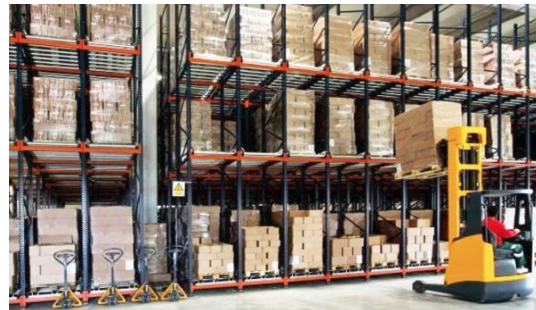
Airports



Shipping



Supply Chain



Manufacturing



Real-Time Data Collection

The intersections of Physical & Digital



Integrated Solutions

Across the Lifecycle of The Built Environment



Data Insights & Automated Decisions

Data imported from multiple sources

We bring together data of multiple types and sources from across our clients businesses, including data bases and traditional files, legacy & new software, POS, IOT, device apps, sensors , BLE beacons / NFC etc.

Data is extracted automatically, integrated filtered and analysed to create a holistic view of operations often revealing related issues which are not obvious when reviewing static reports.



Visualisation & Presentation

Dashboard reporting is automatically updated for real time visualization of data. Engaging and easy to read, widgets are completely customisable and can be configured to suit individual user requirements.

The powerful functionality allows you to interrogate reports and information on the go with filter and drill-down capability..



Machine Learning & Artificial Intelligence

With machine learning we can extract meaning and automate some of that decision making to drive efficiencies and reduce costs.

Artificial intelligence allows the interpretation and presentation of insights into operations which can be used to deliver strategic improvements.

